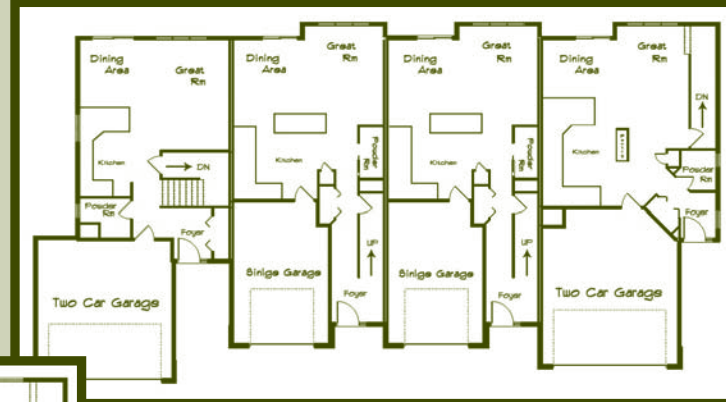
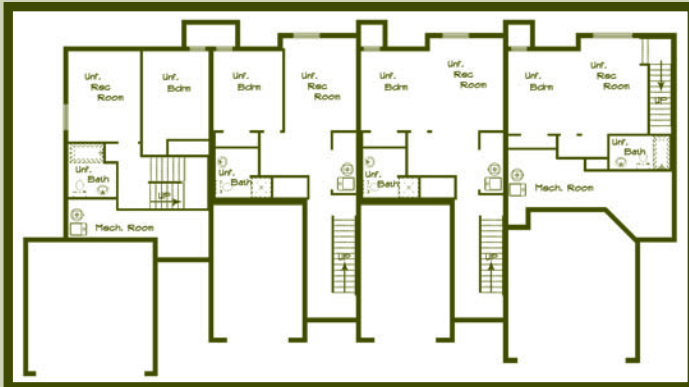


# Floor Plans

# Silver Run Town Homes



JEFF  JUNKERT  
CONSTRUCTION, INC.

2650 OVERLAND AVE.  
406.652.4873  
SALES: 406.208.9344  
[JEFFJUNKERT.COM](http://JEFFJUNKERT.COM)



Silver Run is the second phase of the Grand Peaks development offering 43 town homes that are designed with carefree living in mind. These three-level homes with an unfinished basement feature spacious living with an open floor plan that is flooded with natural light. There are a variety of plans to pick from offering up to three bedrooms and three baths. All plans offer an unfinished basement aimed at delivering additional space for recreation, plus an extra bedroom and bathroom.

# Standard Features

## Environmentally Friendly Design

- Built with Montana's Green Build Guidelines
- 2 x 6 exterior wall construction aimed at increasing lumber efficiency
- James Hardie fiber cement siding
- Pella Energy Star rated windows

## Appliances

- Whirlpool smooth top stove & microwave
- Whirlpool Dishwasher

## Flooring

- Easy to care for laminate flooring on the home's main level
- Carpeted areas in the home's stairways and bedrooms

## Interior Details

- Hardboard painted interior doors
- Painted trim
- Recessed birch or alder panel cabinets
- Laminate counters throughout the home
- Convenient second floor utility room
- Vaulted ceiling in the master suite
- Large windows to take in the pristine views
- 9-foot ceilings on the main level
- Spacious living area with an open floor plan

# Map of the Development

