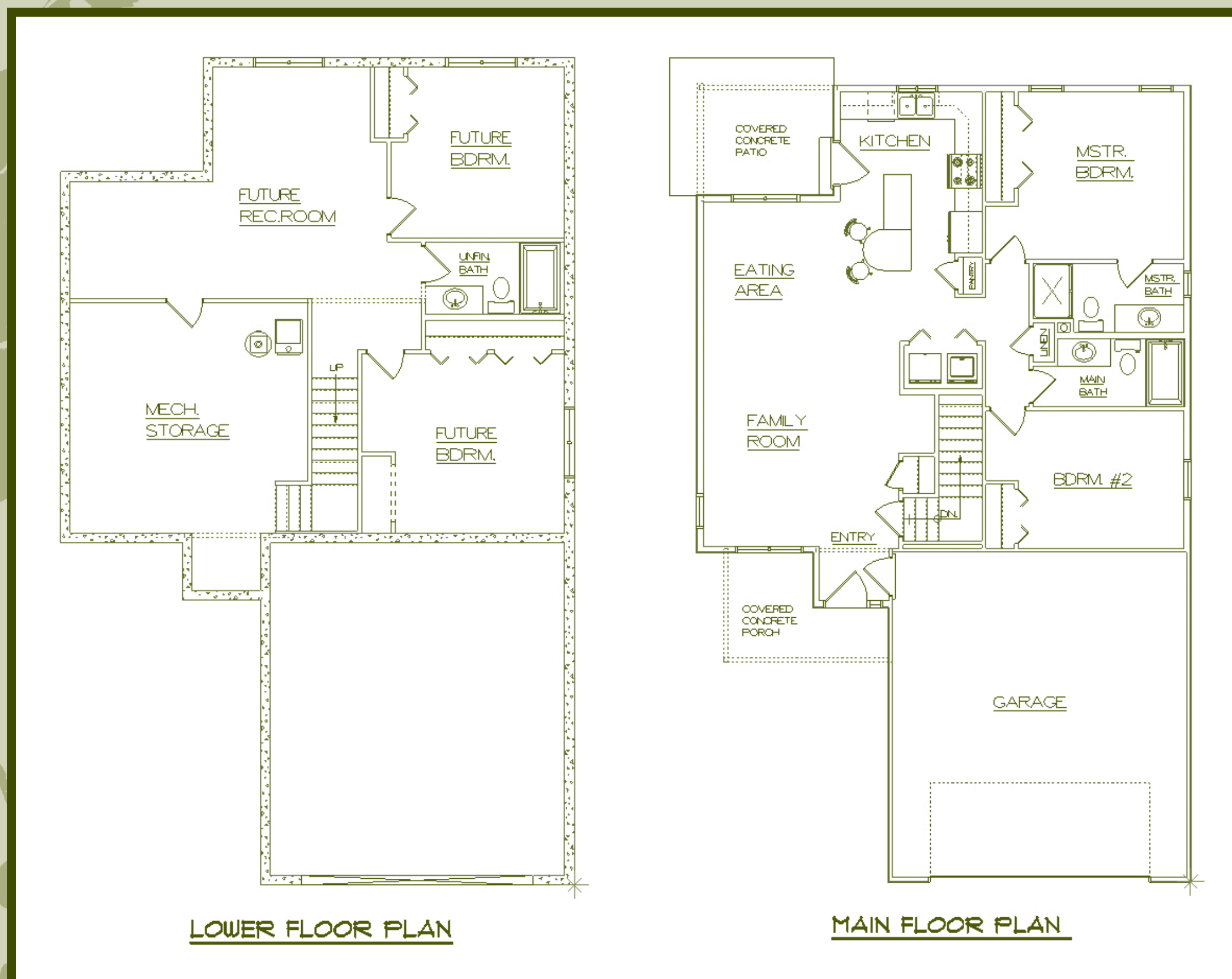


Granite Peaks Bungalows - The Sweetgrass



The Sweetgrass is a home built around family. This split-level home offers more than 1100 square feet of main level living with an open and airy plan that is perfect for entertaining. You'll find additional living space waiting in the unfinished lower level with room for a recreation room, an additional bathroom plus two additional bedrooms. It's energy efficient construction with charm and style.

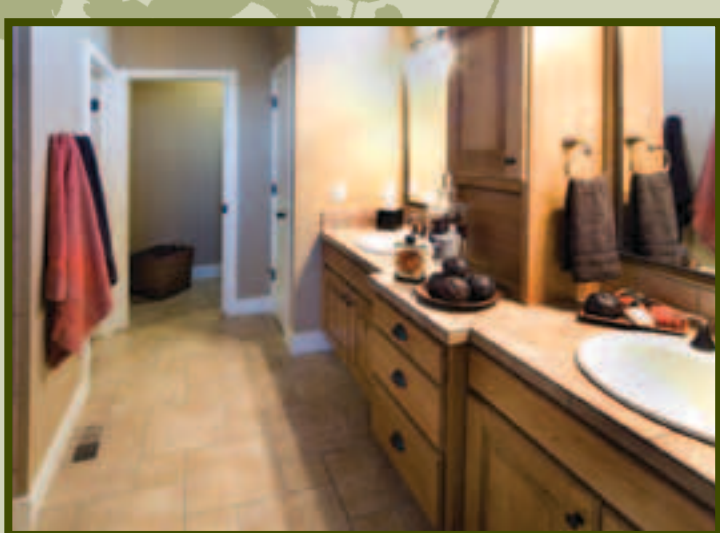


Take a look at our standard features

- 2 x 6 Exterior wall construction
- 30-year asphalt shingles
- Vinyl maintenance-free windows with low E glass
- 80% efficient gas forced air furnace
- Knotty Alder cabinets with your choice of finish
- Energy efficient Whirlpool appliances
- Open floor plan
- Painted trim with a Craftsman flair
- Easy to care for laminate flooring on the home's main level
- Carpeted areas in the home's stairways and bedrooms
- 9-foot ceilings on the main level
- Broomed concrete patio

Main Floor Square Footage: 1170

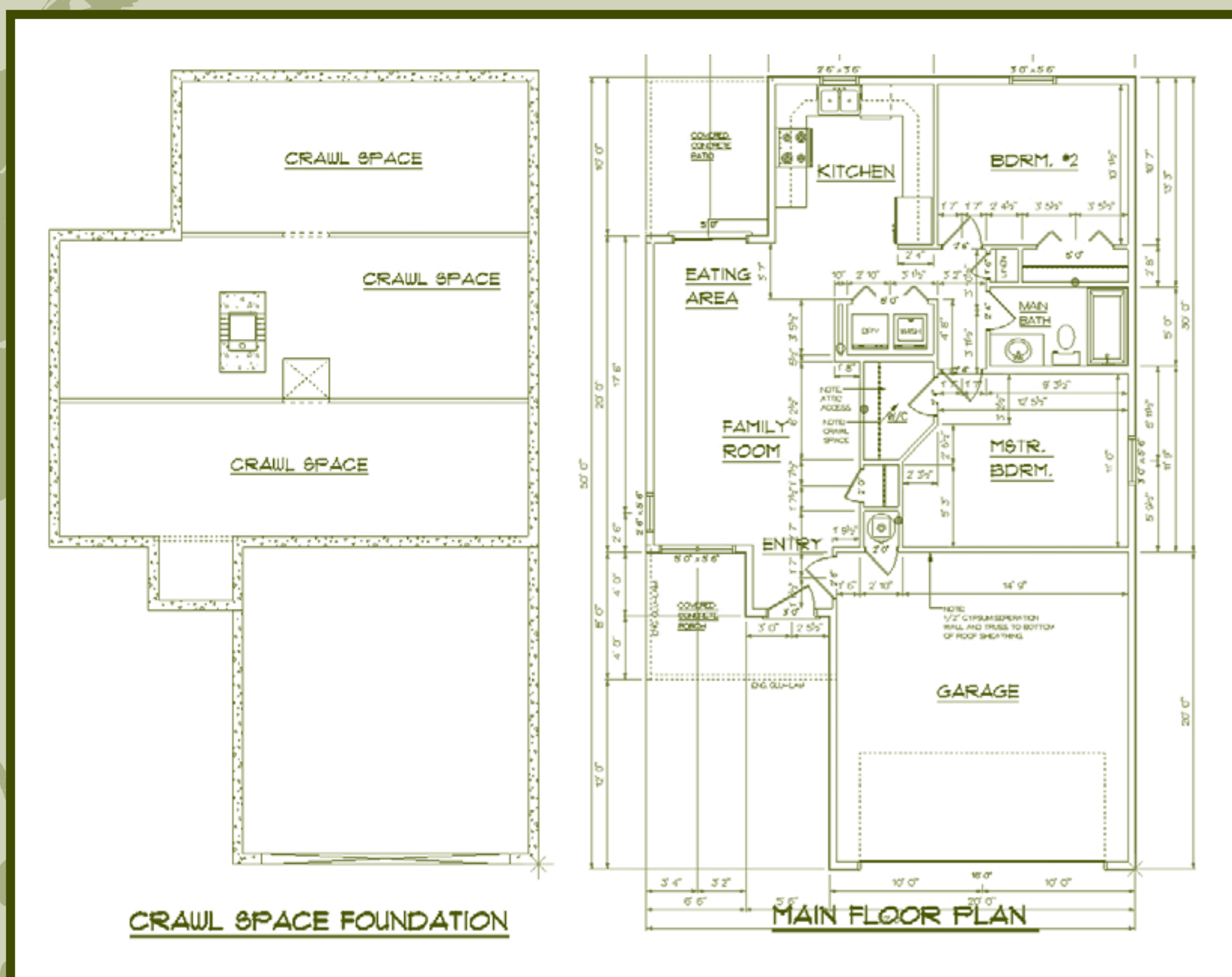
Unfinished Basement Square Footage: 520



Granite Peaks Bungalows - The Rosebud



The Rosebud is a charming home offering a little more than 900 square feet of main level living. With two bedrooms and two baths on the main floor, this home is perfect for a first time home buyer or an empty nester wanting to downsize. The unfinished lower level offers room for recreation, an additional bathroom plus two additional bedrooms. With a charming Craftsman flair and an affordable price tag, the Rosebud is calling you home.

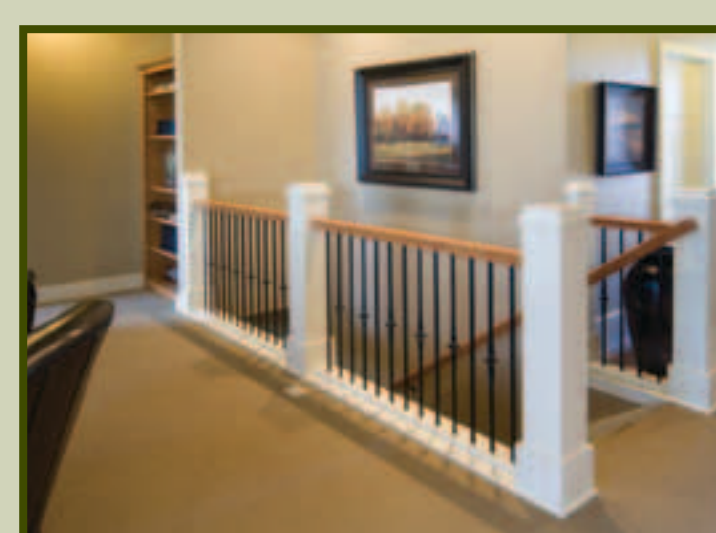


Take a look at our standard features

- 2 x 6 Exterior wall construction
- 30-year asphalt shingles
- Vinyl maintenance-free windows with low E glass
- 80% efficient gas forced air furnace
- Knotty Alder cabinets with your choice of finish
- Energy efficient Whirlpool appliances
- Open floor plan
- Painted trim with a Craftsman flair
- Easy to care for laminate flooring on the home's main level
- Carpeted areas in the home's stairways and bedrooms
- 9-foot ceilings on the main level
- Broomed concrete patio

Main Floor Square Footage: 904

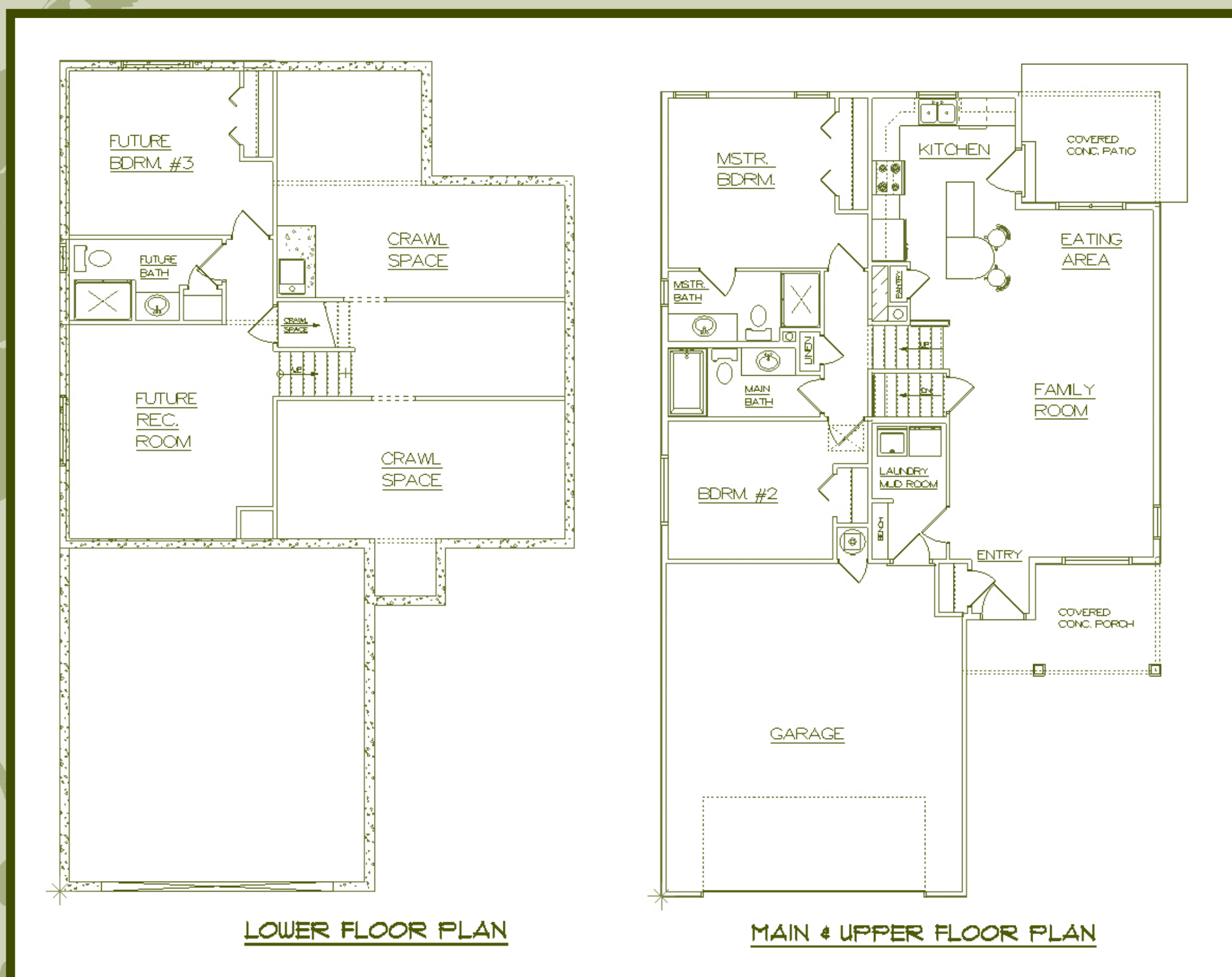
Unfinished Basement Square Footage: 904



Granite Peaks Bungalows - The Prairie



This charming one-story bungalow is perfect for care-free living. Sit and relax on the front porch or entertain in the open kitchen and living space. This two bedroom and two bath plan offers yesteryear flair with all the modern day conveniences you desire. An unfinished basement allows extra space for two additional bedrooms, an extra bath plus a space for recreation. It's affordable, attractive and energy efficient.



Take a look at our standard features

- 2 x 6 Exterior wall construction
- 30-year asphalt shingles
- Vinyl maintenance-free windows with low E glass
- 80% efficient gas forced air furnace
- Knotty Alder cabinets with your choice of finish
- Energy efficient Whirlpool appliances
- Open floor plan
- Painted trim with a Craftsman flair
- Easy to care for laminate flooring on the home's main level
- Carpeted areas in the home's stairways and bedrooms
- 9-foot ceilings on the main level
- Broomed concrete patio

Main Floor Square Footage: 1168

Unfinished Basement Square Footage: 1168

