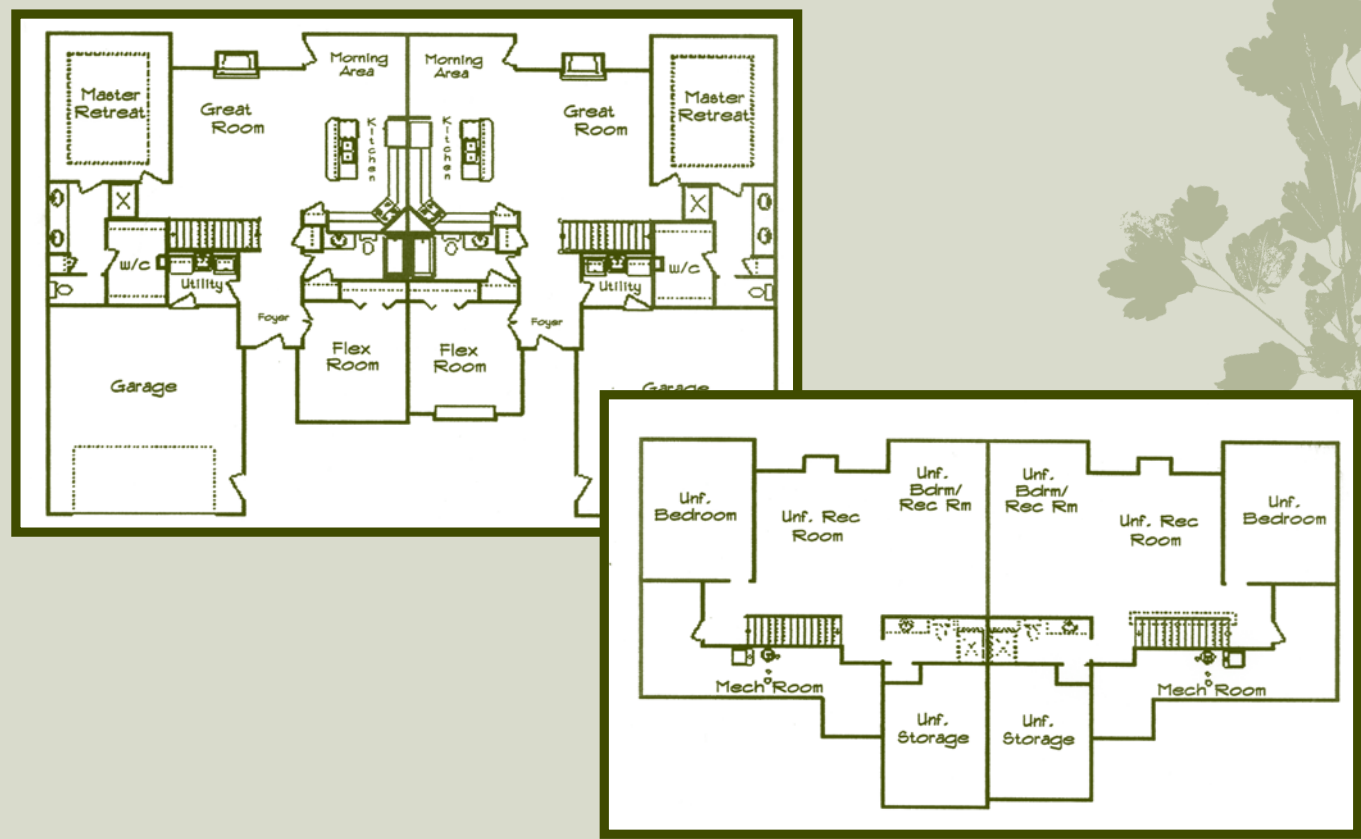
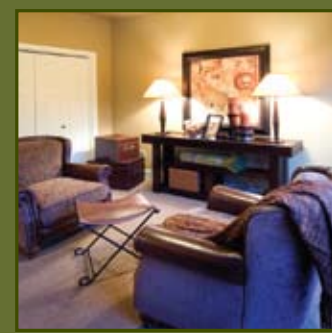


Floor Plans



Granite Peaks Twin Homes



Granite Peak is the development's first phase offering 31 twin homes rich in character with plenty of elbowroom. You'll find spacious main floor living with room on the unfinished lower level for more. You're sure to love the vaulted ceilings, and an open floor plan that is perfect for entertaining.

Standard Features

Environmentally Friendly Design

- Built with NAHB “Model Green” policy
- 2x6 exterior wall construction
- James Hardie “Color Plus” fiber cement siding
- Pella Energy Star Rated Windows

Plumbing Fixtures

- Kohler bath, sinks, & stools
- Moen fixtures in chrome
- Madison Series towel bars & paper holders in Chrome

Appliances

- Whirlpool smooth top stove & microwave
- Whirlpool Dishwasher

Interior Details

- Hardboard painted interior doors
- Painted trim
- Recessed Birch or Maple panel cabinets
- Laminate counters throughout the home
- Tiled tub & shower
- Heat-N-Glo fireplace with tile face & floor level hearth

Flooring

- Carpeted areas in the home’s flex room, stairways, bedrooms, & great room
- Wood flooring in the foyer, kitchen, & morning area
- Tile in the bathrooms & utility room

Map of the Development

